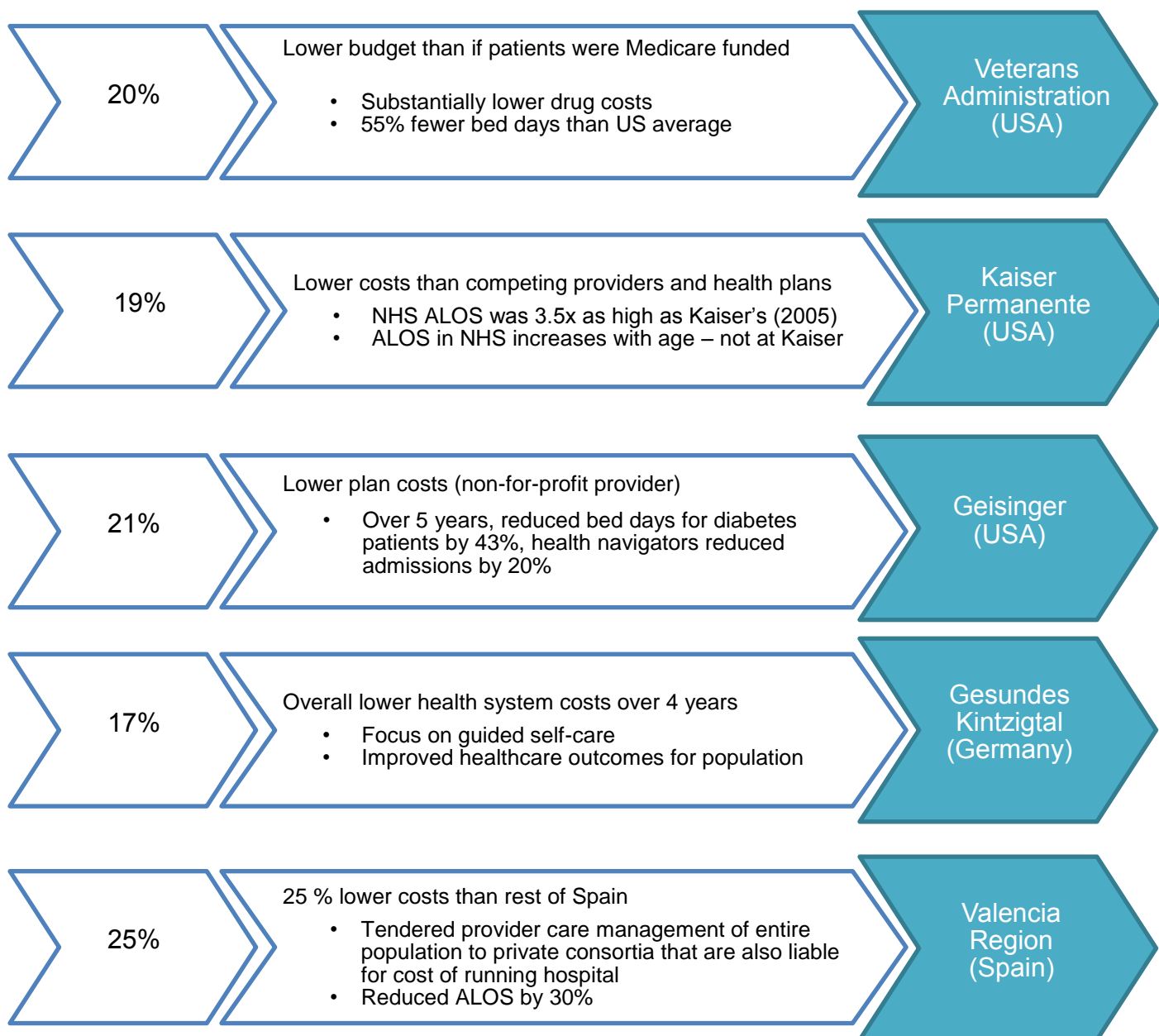


Benefits associated with international Accountable Care models  
 Source: PricewaterhouseCoopers, (ALOS = Average Length of Stay)

**Appendix 2**



**Notes**

The evidence for these models' impact is still evolving and experts such as PricewaterhouseCoopers and the Kings Fund both advise that delivery of financial benefits is interdependent with the overall maturity of the Accountable Care model. However, the evidence does suggest that Accountable Care may be playing a role in slowing the rate of increase in health care spending and bringing improvements to the quality of care. For example the Ribera Salud Accountable Care organisation in Alzira, Spain has developed an integrated system-wide model for health that is operating at a cost base of 25% lower than other parts of the Spanish healthcare system.

It should be noted that translating Accountable Care models into the English health and social care system raises a number of questions and practical challenges. International evidence is that the benefits of greater integration may take several years to fully realise. It is important to also acknowledge that some elements necessary to the delivery of Accountable Care models in England are likely to require lobbying for policy or statutory guidance changes.